

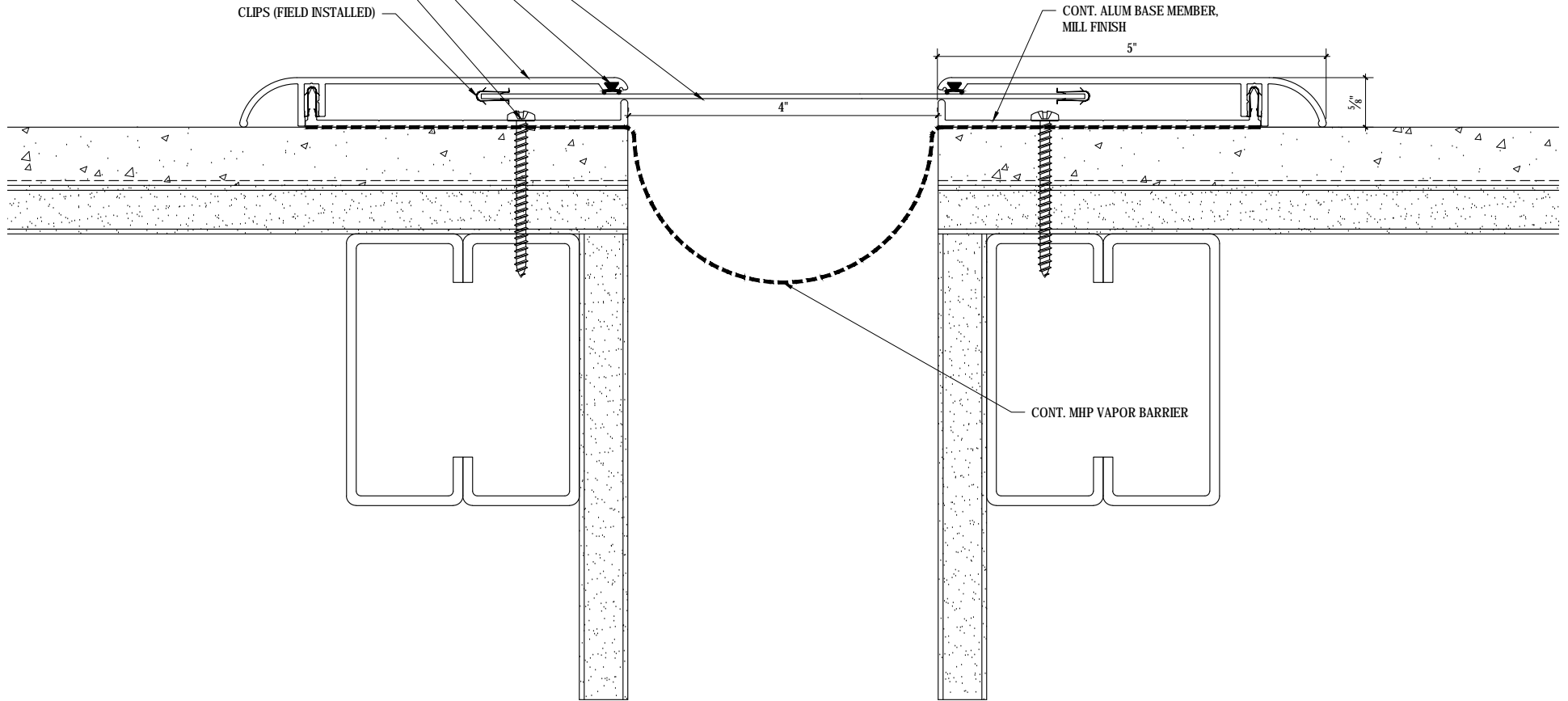
0.060" CLEAR ANODIZED  
ALUM. CENTERING PLATE  
CONT. RUBBER INSERT

CONT. ALUM EXPOSED EXTRUSION.  
CLEAR ANODIZED FINISH

FASTENERS @ 20" O.C. MAX. BY INSTALLER

CLIPS (FIELD INSTALLED)

CONT. ALUM BASE MEMBER,  
MILL FINISH



CONT. MHP VAPOR BARRIER

SCALE: 6"=1'-0"



**M.H. POWELL & CO., INC.**  
ARCHITECTURAL SEISMIC EXPANSION JOINT SYSTEMS

2313 YATES AVENUE | PHONE : (323) 887-0037  
COMMERCE, CA 90040 | FAX : (323) 887-0877  
WEB : www.mhpowell.net

**MODEL**  
**KHR-4-4**  
EXT. WALL/CEILING EJC

PROJECT : \_\_\_\_\_ PROJECT # : \_\_\_\_\_  
LOCATION : \_\_\_\_\_ DATE : \_\_\_\_\_  
ARCHITECT : \_\_\_\_\_  
CUSTOMER : \_\_\_\_\_

PAGE #